

Xilinx AMI Frequently Asked Questions

How do I copy files to a Xilinx AMI?

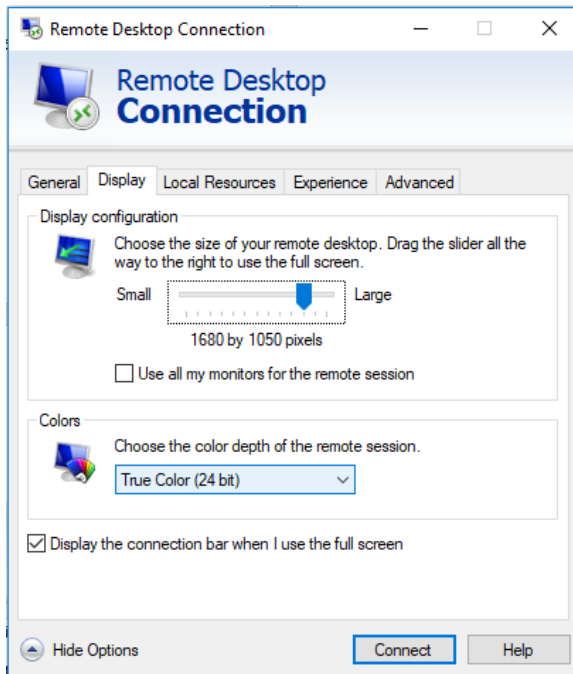
- **NOTE:** Contact your sys admin before trying to connect through SSH to provide you with the correct command in case you need proxy setup.
- If the AMI is CentOS based:
 - \$ scp -i <pem-name>.pem <source_file_from_HOSTNAME> centos@<public_DNS_name>:/home/centos/<directory>
- If the AMI is Ubuntu based:
 - \$ scp -i <pem-name>.pem <source_file_from_HOSTNAME> ubuntu@<public_DNS_name>:/home/ubuntu/<directory>

How do I copy files from a Xilinx AMI?

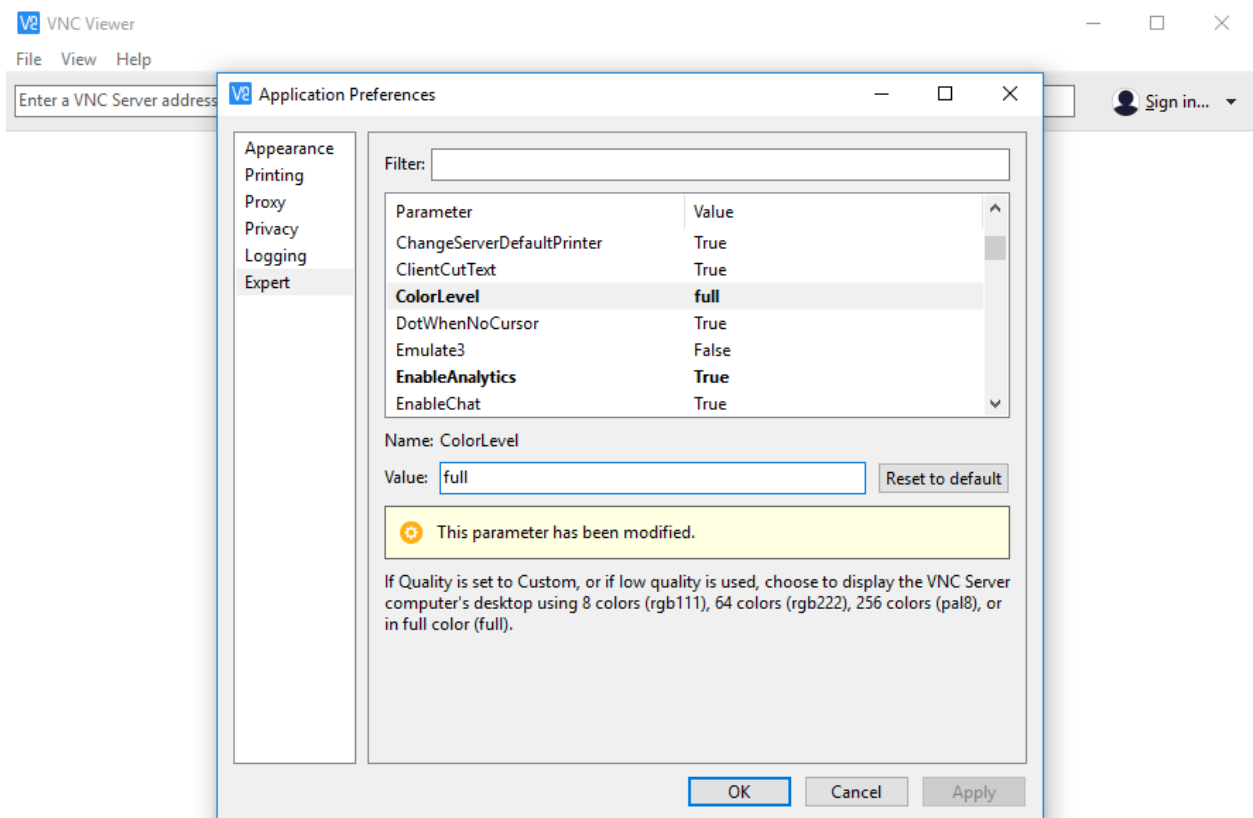
- **NOTE:** Contact your system admin before trying to connect through SSH to provide you with the correct command in case you need proxy setup.
- If the AMI is CentOS based:
 - \$ scp -i <pem-name>.pem centos@<public_DNS_name>:<file_path_to_copy_from> <output_path_from_HOSTNAME>
- If the AMI is Ubuntu based:
 - \$ scp -i <pem-name>.pem ubuntu@<public_DNS_name>:<file_path_to_copy_from> <output_path_from_HOSTNAME>

How do I fix color issues?

- Please select 24-bit color on Remote Desktop to fix any color issues in Vivado for your connection.



- Please select “full” color in VNC Viewer under “Application Preferences” in the “expert” section.



Where Can I find Example Designs from Xilinx?

- Vivado comes pre-loaded with various free example designs. We also recommend following our IP Integrator lab if you would like to familiarize yourself better with our tools: https://www.xilinx.com/support/documentation/sw_manuals/xilinx2020_1/ug995-vivado-ip-subsystems-tutorial.pdf

How do I terminate Instances?

- Follow this link to for instructions:
<https://docs.aws.amazon.com/quickstarts/latest/vmlaunch/step-3-clean-up-instance.html>

How do I set up a Local License Server with Xilinx AMI?

1. Set up your floating license server machine with your chosen licenses. For instructions on setting up a floating license server, please see the below Answer Record.
 - a. <https://www.xilinx.com/support/answers/5332.html>
2. Open the debug log of the license server, and note down the following ports used by the license server:
 - a. LMGRD TCP Port
 - i. 14:14:16 (lmgrd) lmgrd tcp-port 2100
 - b. Daemon TCP Port
 - i. 14:14:16 (lmgrd) xilinx using TCP-port 53931
 - c. Host name
 - i. 14:14:16 (xilinx) (@xilinx-SLOG@) Host used in license file:
EXAMPLEHOST
3. Set up your AMI instance in your AWS infrastructure.
4. Add the following commands to your 'ssh' command to connect to the AMI:
 - a. -R <lmgrd_port>:<host>:<lmgrd_port> -R <daemon_port>:<host>:<daemon_port>
 - b. -R 2100:EXAMPLEHOST:2100 -R 53931:EXAMPLEHOST:53931
5. After connecting to the AMI instance, update the /etc/hosts file (with sudo) to include the host name of the server:
 - a. sudo /etc/hosts

- b. 127.0.0.1 localhost localhost.localdomain localhost4 localhost4.localdomain4
EXAMPLEHOST
::1 localhost localhost.localdomain localhost6 localhost6.localdomain6
EXAMPLEHOST
- 6. Save the /etc/hosts file.
- 7. Set environment variable XILINXD_LICENSE_FILE to the port and hostname of the license server:
 - a. export XILINXD_LICENSE_FILE=2100@EXAMPLEHOST
- 8. You can now launch Xilinx tools and access your floating licensing server for licenses.

Additional Troubleshooting Tips for Amazon Instances:

- Most other questions can be answered here:
<https://docs.aws.amazon.com/AWSEC2/latest/UserGuide/ec2-instance-troubleshoot.html>